

www.planhalfmoon.com

WELCOME

**TOWN OF
HALFMOON
COMPREHENSIVE
PLAN UPDATE**



**OPEN
HOUSE &
VISIONING
WORKSHOP**



1

WHAT IS A COMPREHENSIVE PLAN?

COMPREHENSIVE PLAN UPDATE COMMITTEE (CPUC)

- Richard M. Harris, AICP (Chair)
- Jeremy Connors
- Paul Hotaling
- Steven Kucskar
- Joseph Landy
- Michael D. Morand
- Lyn Murphy
- J. Daniel Wojcik
- William Herman
- Peter Bardunias
- Nancy Morris
- Deborah Curto
- Donald Roberts

A Comprehensive Plan is both a vision for the future and a blueprint for how to get there. It creates a future framework for a range of topics such as land use, economic development, infrastructure, and housing. The Comprehensive Plan will identify a vision for the future and outline a series of recommendations and steps to implement the vision.

The planning process is being led by the Halfmoon Comprehensive Plan Update Committee and facilitated by Town staff, and the consultant team, MJ Engineering and Land Surveying P.C.

To learn more visit: planhalfmoon.com



Halfmoon Population: 25,662

Source: US Census (2020)

Population Growth 2010-2020

	2010	2020	2010-2020 % Change	Population Difference
Town of Halfmoon	21,535	25,662	19.2%	4,127
Saratoga County	219,607	235,509	7.2%	15,902
New York State	19,378,102	20,201,249	4.2%	823,147



- Halfmoon’s population grew by 4,127 people between the 2010 and 2020 US Census counts.
- The percentage increase in population (19.2%) was significantly higher than the rate for NY State.

Age Groups in Halfmoon - Comparison

	Under 5 Years	School Age 5-17	College Age 18-24	Young Adult 25-44	Adult 45-64	Older Adult 65+
Town of Halfmoon	5.7%	14.5%	6.8%	27.5%	29.7%	15.7%
New York State	5.7%	15.2%	9.0%	27.2%	26.3%	16.5%
U.S.	5.9%	16.6%	9.2%	26.5%	25.6%	15.9%



- Halfmoon has a lower percentage of college-age residents than NY State and the nation.
- Halfmoon has a higher percentage of its population in the 45-64 age category than the State and nation.



Town of Halfmoon

Project Area

TOWN OF HALFMOON



Comprehensive Plan

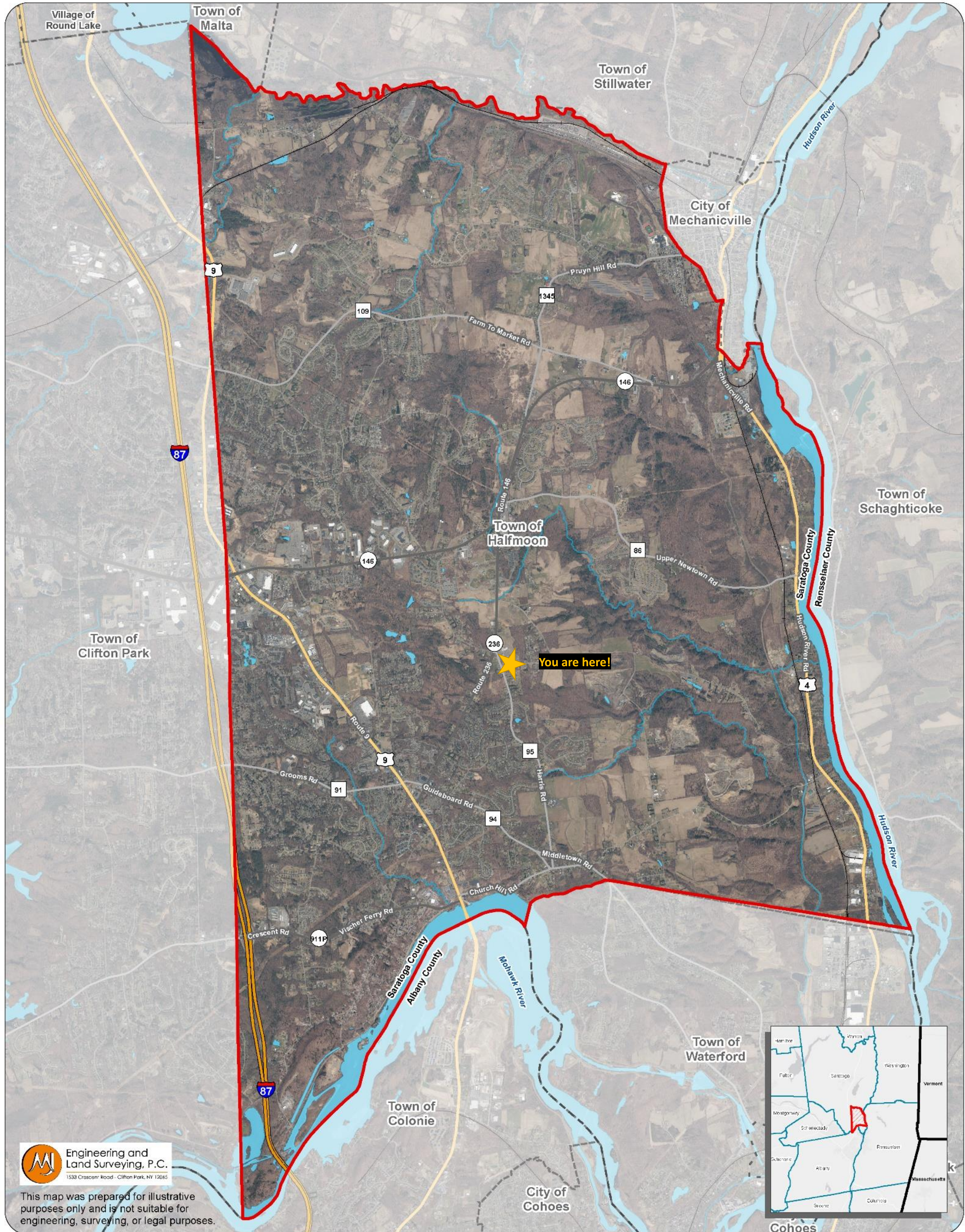
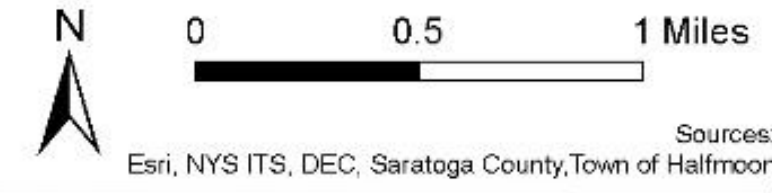
DRAFT

Project Area
March 2023

LEGEND

- Study Area
- County Boundary
- City/Town Boundary
- Village Boundary
- Railroad
- Interstates
- US Routes
- State Routes
- County Routes
- Water Body
- River/Stream

Areas of Interest	Estimated Acreage
Primary Study Area - Town of Halfmoon	21513.00



Engineering and Land Surveying, P.C.
1533 Crascom Road - Clifton Park, NY 12065

This map was prepared for illustrative purposes only and is not suitable for engineering, surveying, or legal purposes.



Town of Halfmoon Zoning

TOWN OF HALFMOON



Comprehensive Plan

DRAFT

Zoning
March 2023

LEGEND

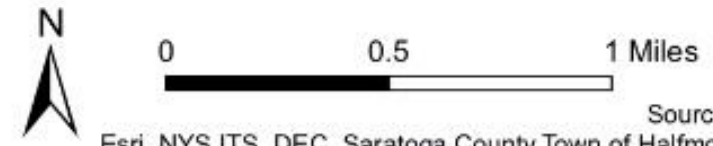
- Study Area
- County Boundary
- Village Boundary
- City/Town Boundary
- Tax Parcels
- Interstates
- US Routes
- State Routes
- County Routes
- Railroad
- Water Body

ZONING DISTRICTS

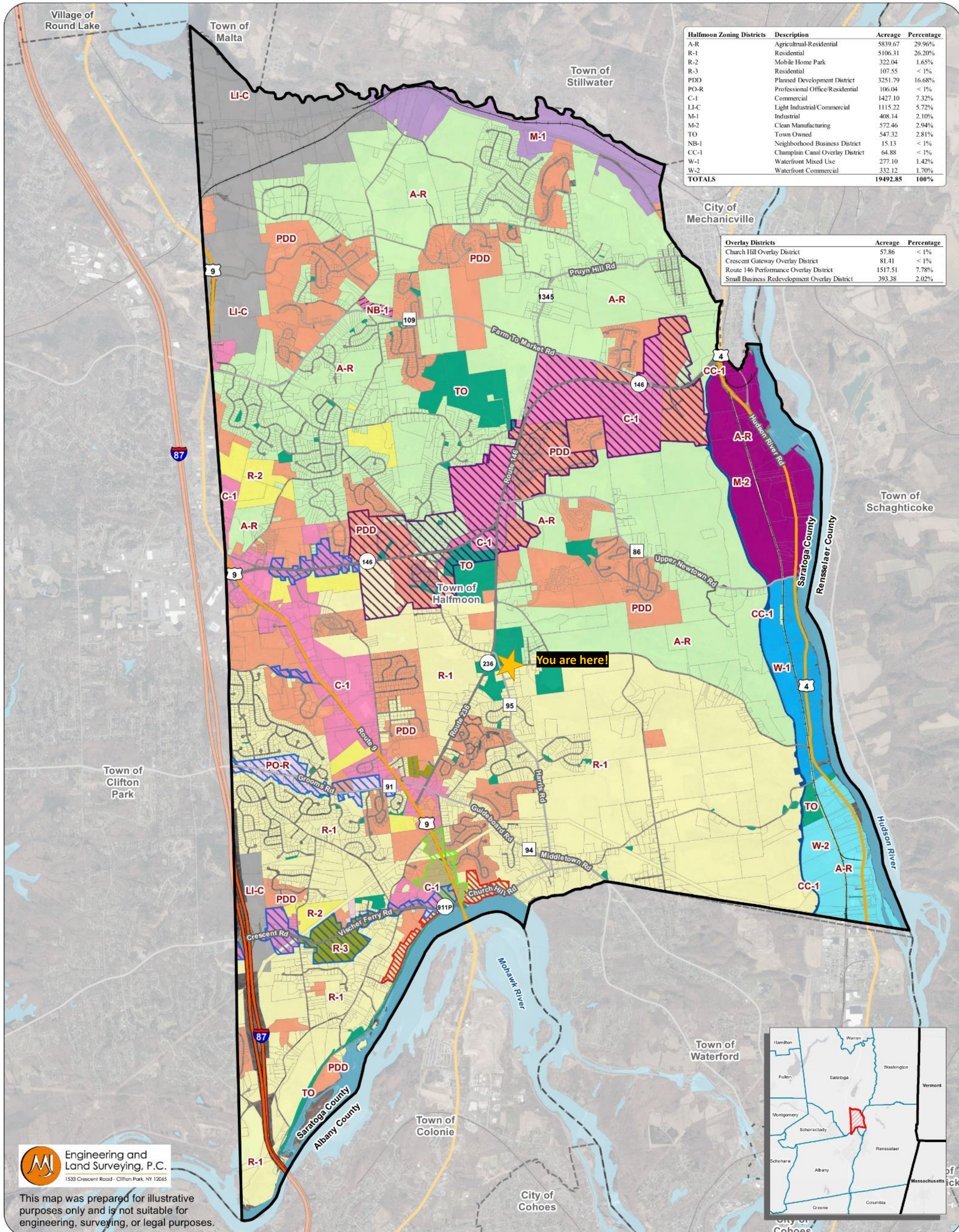
- A-R Agricultural-Residential
- R-1 Residential
- R-2 Mobile Home Park
- R-3 Residential
- PDD Planned Development District
- PO-R Professional Office/Residential
- C-1 Commercial
- LI-C Light Industrial/Commercial
- M-1 Industrial
- M-2 Clean Manufacturing
- TO Town Owned
- NB-1 Neighborhood Business District
- CC-1 Champlain Canal Overlay District
- W-1 Waterfront Mixed Use
- W-2 Waterfront Commercial

OVERLAY DISTRICTS

- Church Hill Overlay District
- Crescent Gateway Overlay District
- Route 146 Performance Overlay District
- Small Business Redevelopment Overlay District



Sources: Esri, NYS ITS, DEC, Saratoga County, Town of Halfmoon



Halfmoon Zoning Districts	Description	Acreage	Percentage
A-R	Agricultural-Residential	5839.67	29.96%
R-1	Residential	5106.31	26.20%
R-2	Mobile Home Park	322.04	1.65%
R-3	Residential	107.55	< 1%
PDD	Planned Development District	3251.79	16.68%
PO-R	Professional Office/Residential	106.04	< 1%
C-1	Commercial	1427.10	7.32%
LI-C	Light Industrial/Commercial	1115.22	5.72%
M-1	Industrial	408.14	2.10%
M-2	Clean Manufacturing	572.46	2.94%
TO	Town Owned	547.32	2.81%
NB-1	Neighborhood Business District	15.13	< 1%
CC-1	Champlain Canal Overlay District	64.88	< 1%
W-1	Waterfront Mixed Use	277.10	1.42%
W-2	Waterfront Commercial	332.12	1.70%
TOTALS		19492.85	100%

Overlay Districts	Acreage	Percentage
Church Hill Overlay District	57.86	< 1%
Crescent Gateway Overlay District	81.41	< 1%
Route 146 Performance Overlay District	1517.51	7.78%
Small Business Redevelopment Overlay District	393.38	2.02%

Engineering and Land Surveying, P.C.
1533 Crescent Road - Clifton Park, NY 12065

This map was prepared for illustrative purposes only and is not suitable for engineering, surveying, or legal purposes.



Town of Halfmoon

Land Use

**TOWN OF
HALFMOON**



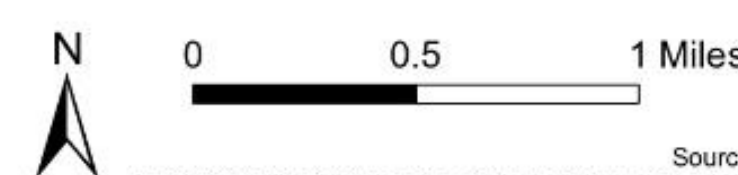
Comprehensive Plan

DRAFT

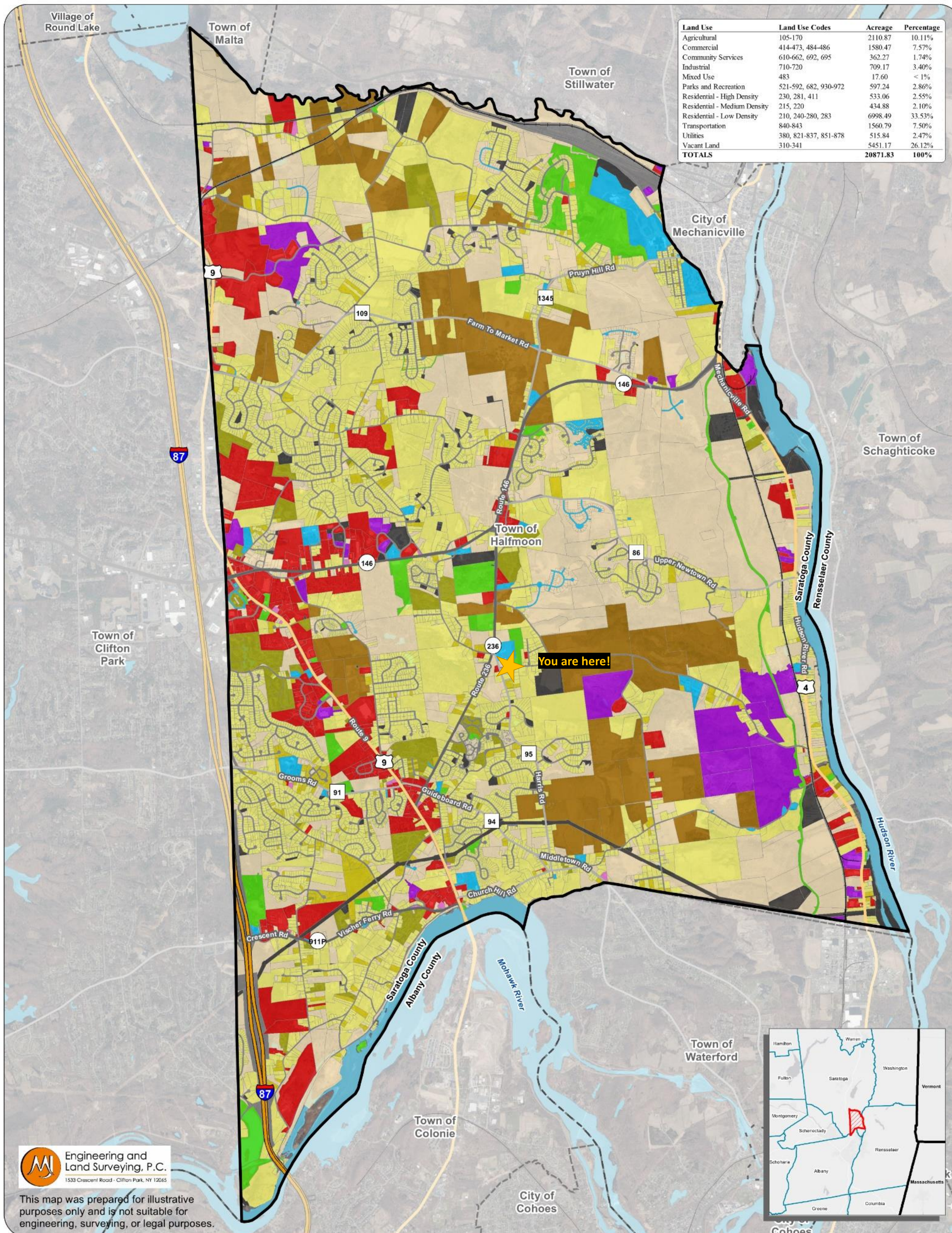
Land Use
March 2023

LEGEND

- Study Area
 - County Boundary
 - Village Boundary
 - City/Town Boundary
 - Water Body
- Interstates
 - US Routes
 - State Routes
 - County Routes
 - Railroad
- Agricultural
 - Commercial
 - Community Services
 - Industrial
 - Mixed Use
 - Parks and Recreation
 - Residential - High Density
 - Residential - Medium Density
 - Residential - Low Density
 - Transportation
 - Utilities
 - Vacant Land



Sources: Esri, NYS ITS, DEC, Saratoga County, Town of Halfmoon



Engineering and Land Surveying, P.C.
1533 Crescent Road - Clifton Park, NY 12065

This map was prepared for illustrative purposes only and is not suitable for engineering, surveying, or legal purposes.



Town of Halfmoon

Parks, Recreation, and Conserved Land

TOWN OF HALFMOON



Comprehensive Plan

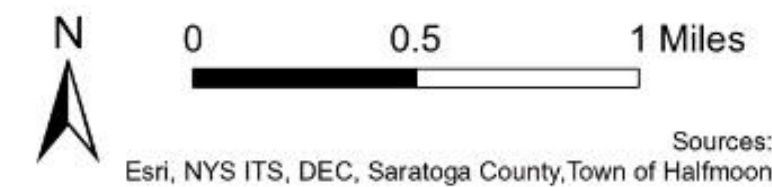
DRAFT
Parks, Recreation
& Conserved Lands

March 2023

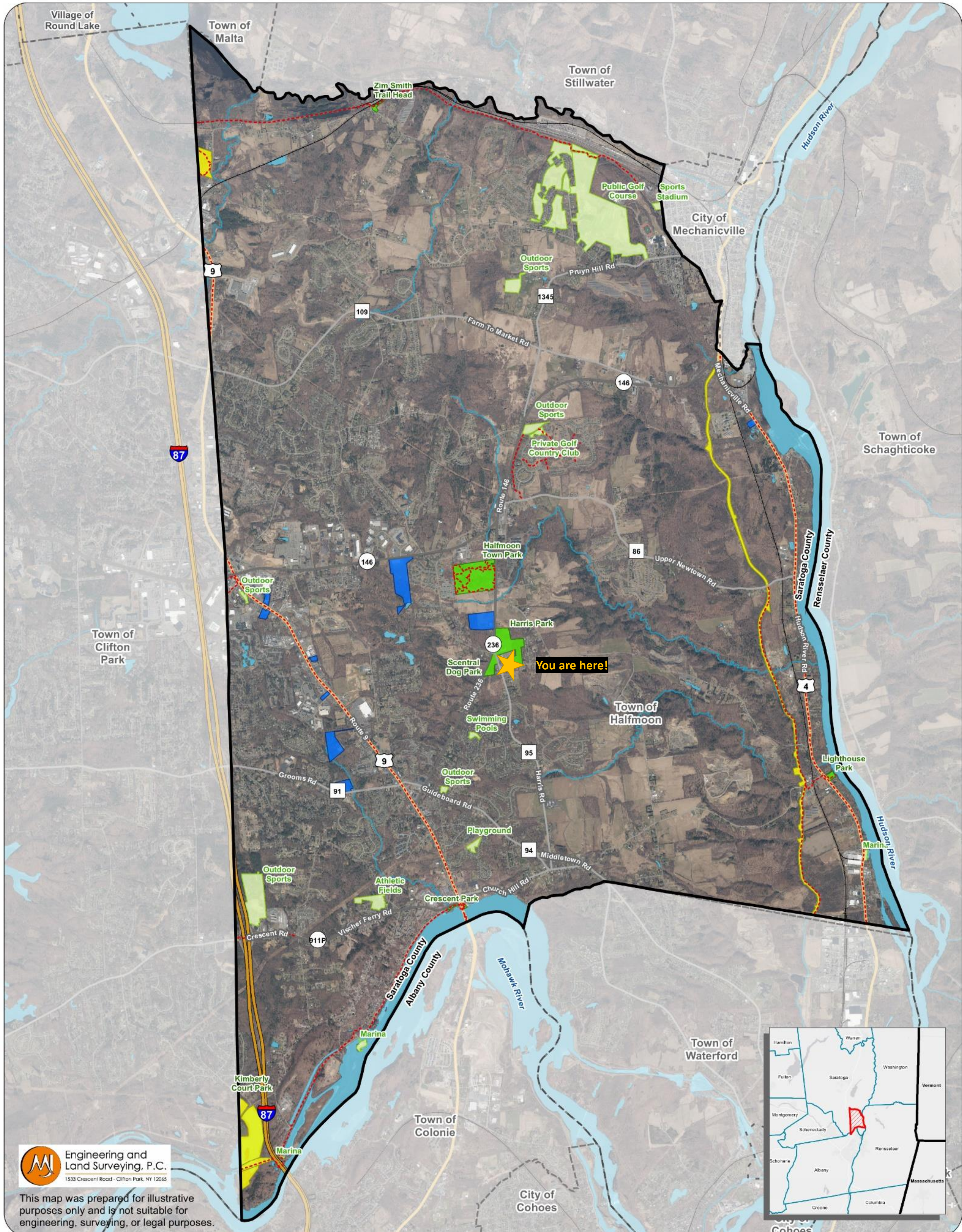
LEGEND

- Study Area
- County Boundary
- Village Boundary
- City/Town Boundary
- Railroad
- Interstates
- US Routes
- State Routes
- County Routes
- Water Body
- River/Stream
- Trails
- Parks
- Outdoor Recreation
- Indoor Recreation
- Conserved Lands

Parks, Recreation and Conserved Lands	Acree	Percentage
Parks (Local, County, and State)	96.15	< 1%
Outdoor Recreation	304.59	1.42%
Indoor Recreation	82.89	< 1%
Conserved Lands	147.44	< 1%
TOTALS	631.07	



Sources: Esri, NYS ITS, DEC, Saratoga County, Town of Halfmoon



Engineering and Land Surveying, P.C.
1533 Crescent Road - Clifton Park, NY 12065

This map was prepared for illustrative purposes only and is not suitable for engineering, surveying, or legal purposes.



Town of Halfmoon

Historic Resources

TOWN OF HALFMOON



Comprehensive Plan

DRAFT
Historic Resources

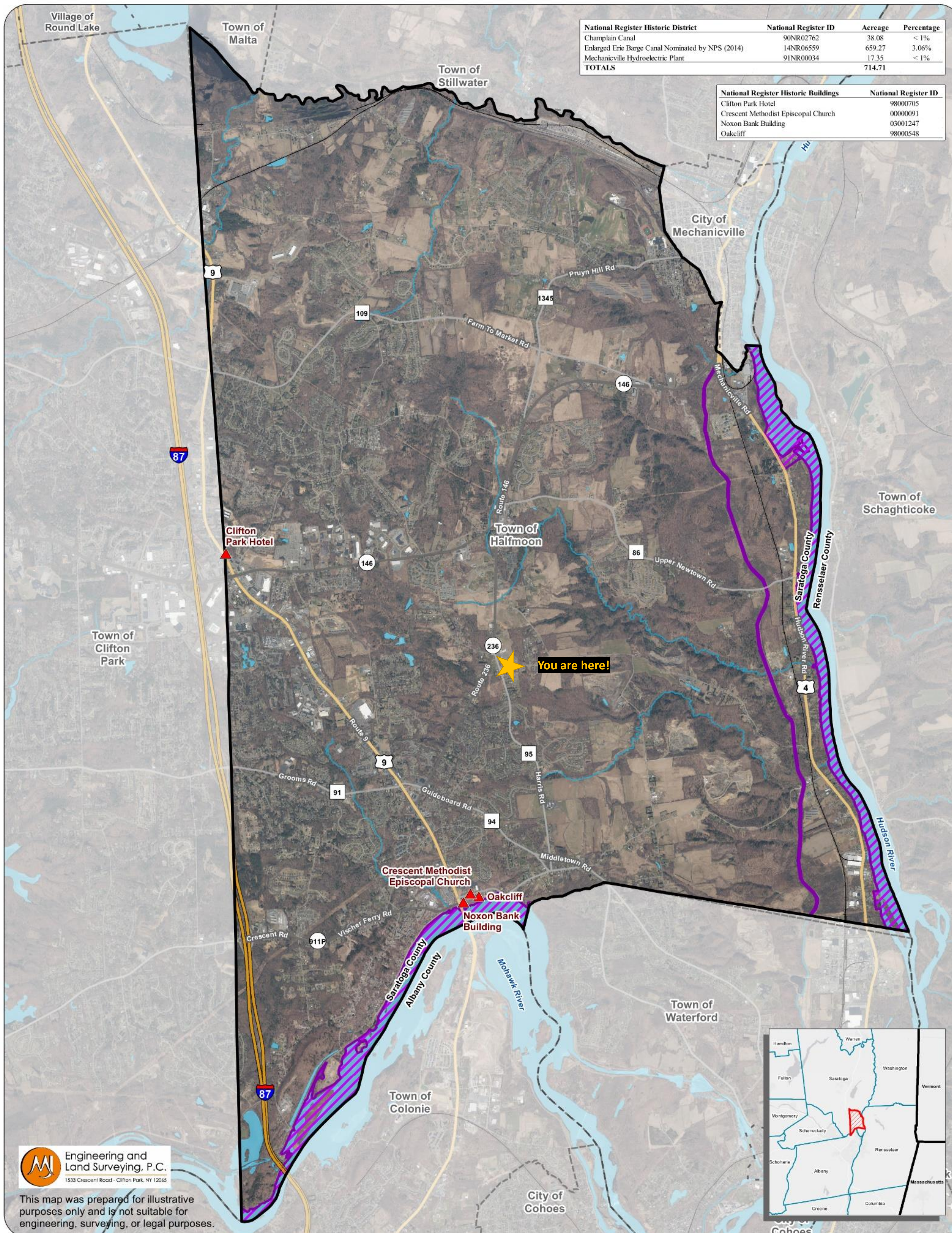
March 2023

LEGEND

- Study Area
- County Boundary
- Village Boundary
- City/Town Boundary
- Railroad
- Interstates
- US Routes
- State Routes
- County Routes
- Water Body
- River/Stream
- National Register Historic District (NYSHPO)
- National Register Historic Building (NRIS)



Sources: Esri, NRIS, NYS ITS, DEC, Saratoga County, Town of Halfmoon



Engineering and Land Surveying, P.C.
1533 Crescent Road - Clifton Park, NY 12065

This map was prepared for illustrative purposes only and is not suitable for engineering, surveying, or legal purposes.



Town of Halfmoon

Environmental Constraints

TOWN OF HALFMOON



Comprehensive Plan

Environmental Constraints

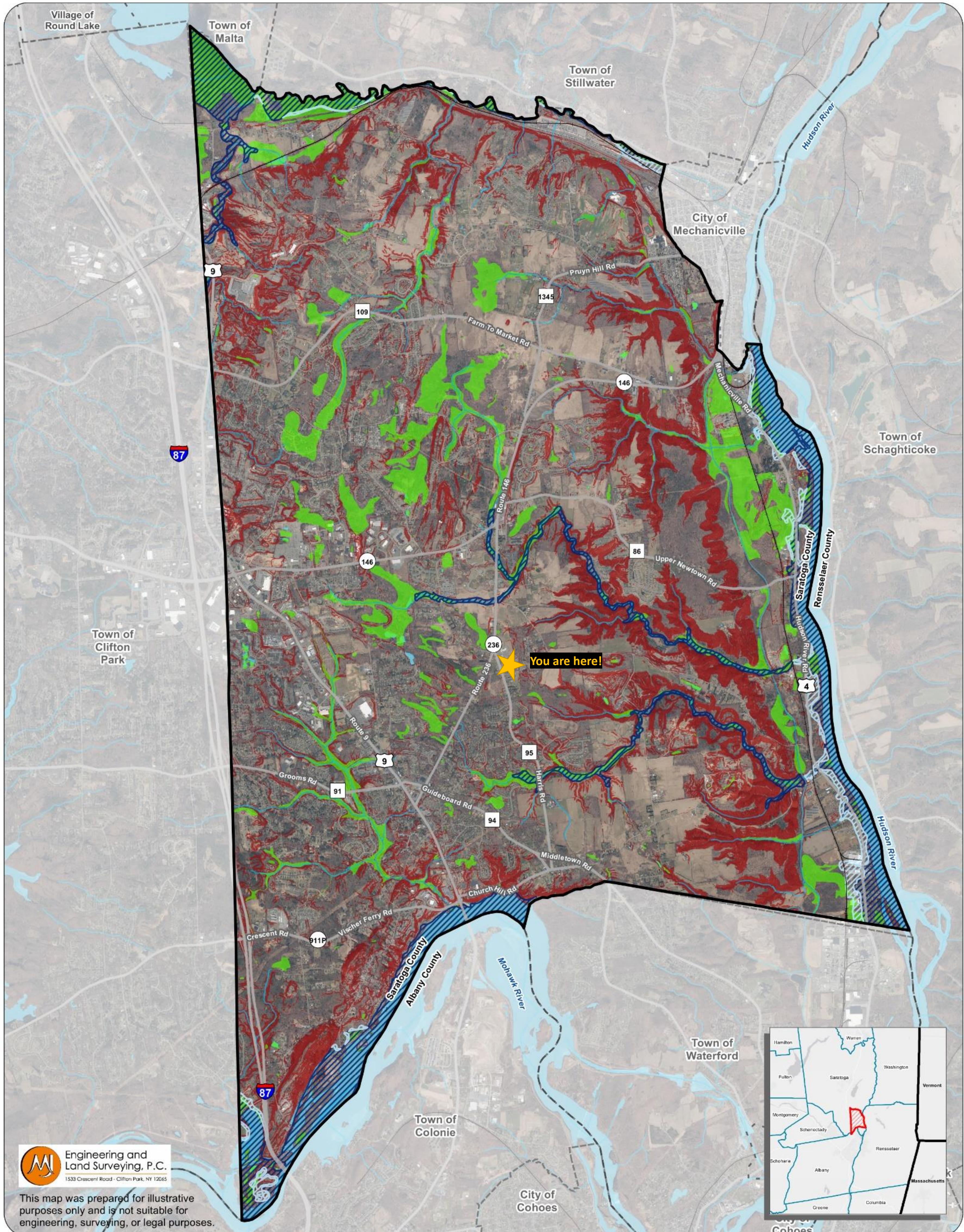
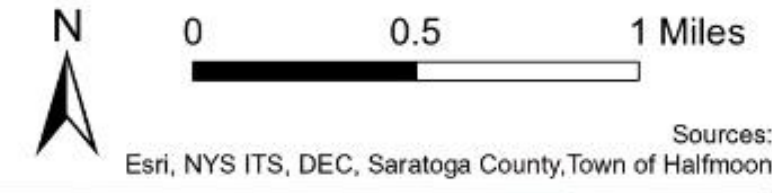
March 2023

DRAFT

LEGEND

- Study Area
- County Boundary
- Village Boundary
- City/Town Boundary
- Railroad
- Major Roads
- Water Body
- River/Stream
- 100-Year Floodzone
- 500-Year Floodzone
- Slopes > 15%
- Known Wetlands (NYSDEC, NWI)

Environmental Constraints	Acreage	Percentage
Known Wetlands (NYSDEC, NWI)	1895.90	8.81%
100-Year Floodzone	1493.85	6.94%
500-Year Floodzone	169.96	< 1%
Steep Slopes	4383.57	20.38%



Engineering and Land Surveying, P.C.
1533 Crescent Road - Clifton Park, NY 12065

This map was prepared for illustrative purposes only and is not suitable for engineering, surveying, or legal purposes.



3

WHAT IS YOUR VISION?

Describe what you want Halfmoon to be like in 5, 10, or 20 years...

Post-It Notes Here

Post-It Notes Here



4

CHALLENGES AND CONCERNS

Share your concerns and what you see as challenges for Halfmoon.

Post-It Notes Here

Post-It Notes Here



4

OPPORTUNITIES AND STRENGTHS

What opportunities and strengths do you see in Halfmoon?

Post-It Notes Here

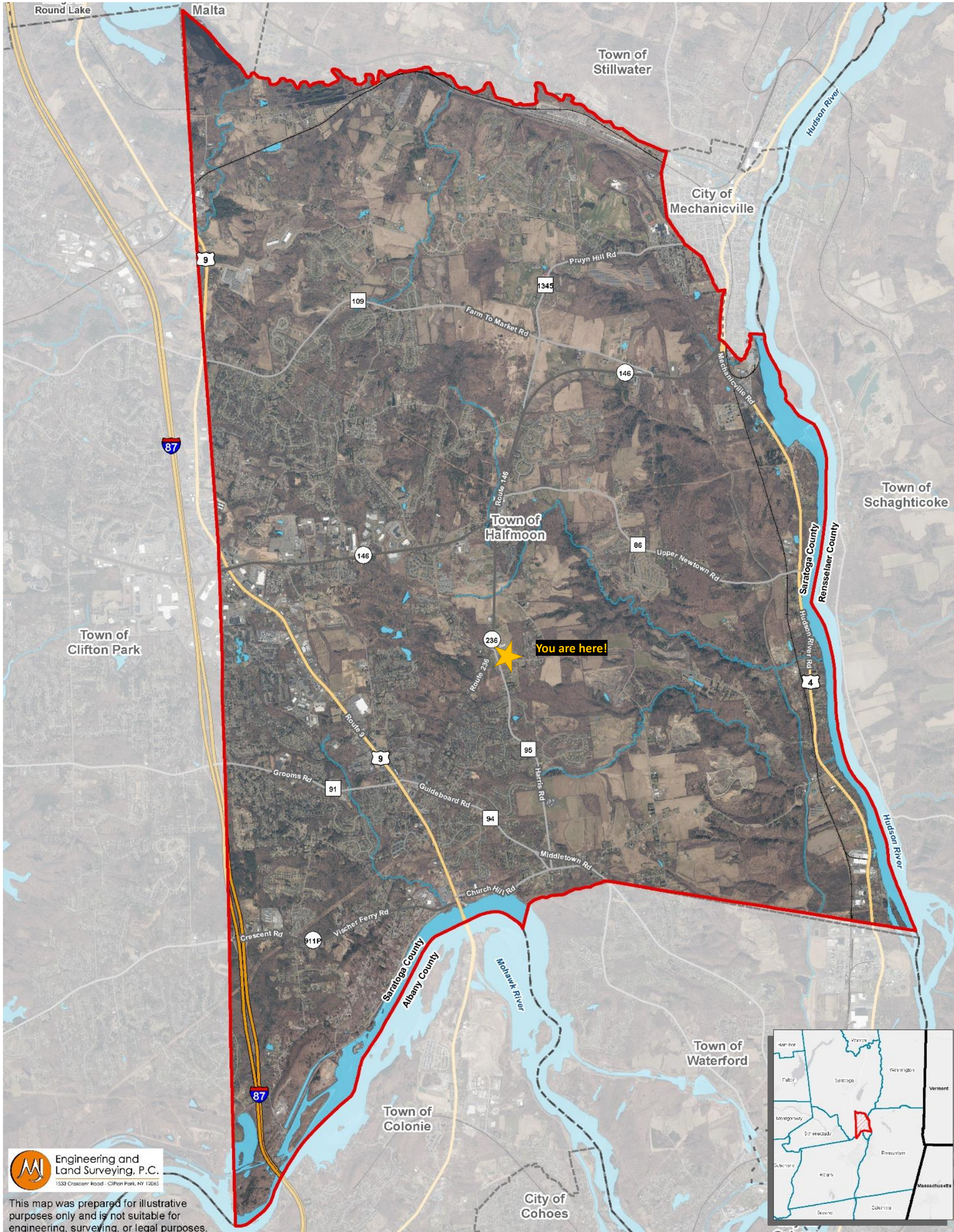
Post-It Notes Here



5

THE PLACES WE GATHER

Place stickers on the map to show the places you gather in your community and what you do there...



My neighborhood



Socializing



Shopping



Religious & Spiritual



Dining



Education



Recreation



SERVING THE GENERATIONS

What are your generational needs (services, housing, shopping, learning, healthcare, transportation, etc.)?

**Traditionalists or Silent
Generation:
Born 1945 and before**

**Baby Boomers:
Born 1946-1964**

**Generation X:
Born 1965-1980**

**Millennials or Generation Y:
Born 1981-1996**

**Generation Z :
Born after 1996**

Post-It Notes Here

Post-It Notes Here

Post-It Notes Here

Post-It Notes Here

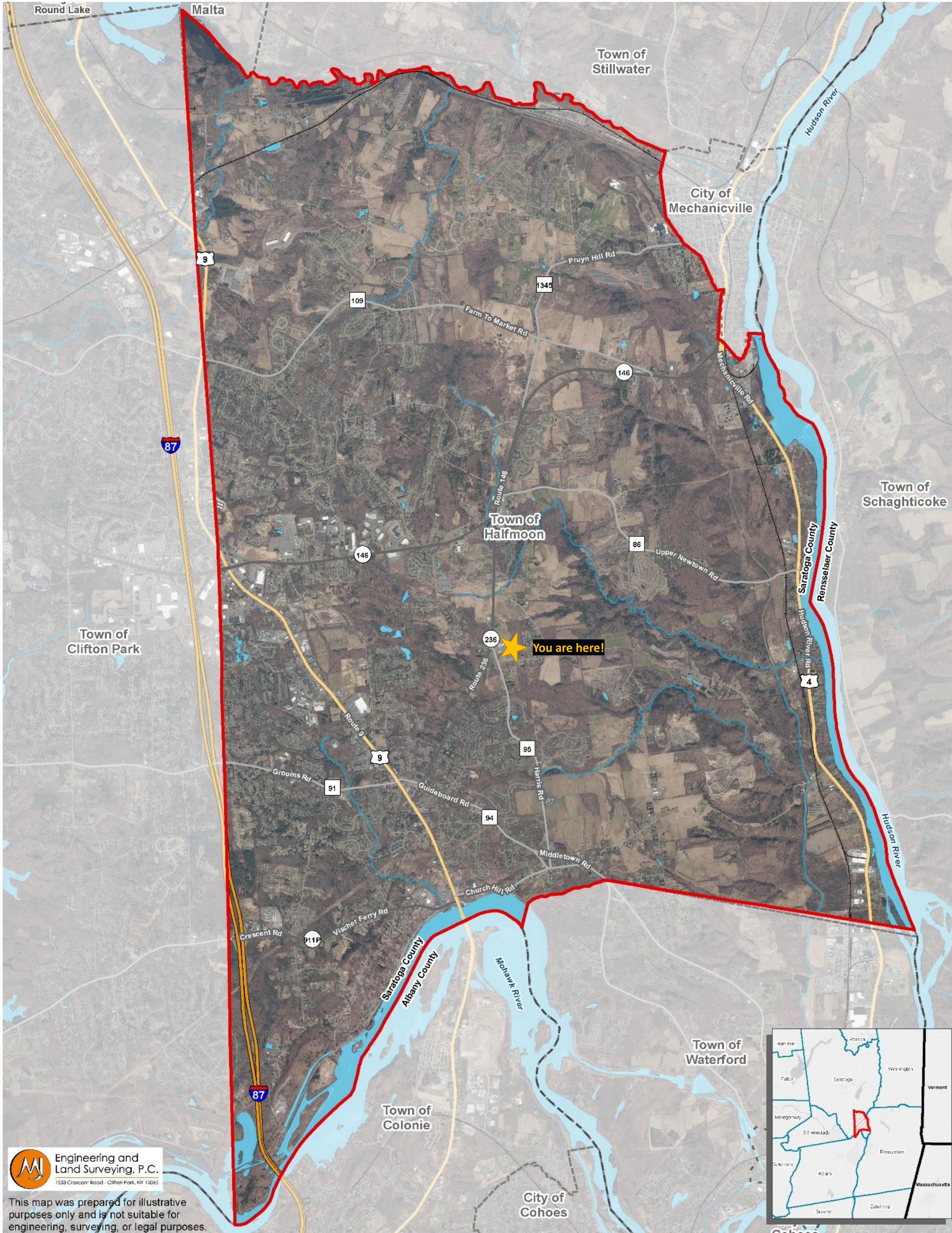
Post-It Notes Here



7

GETTING AROUND TOWN

Map mobility in your community! Put a sticker on the map where you walk, bike, or take public transportation.



Walk



Bike



Public Transportation



Economic Development & Agriculture

Share your ideas about economic development in Halfmoon.

Post-It Notes Here

Share your ideas about agriculture in the community.

Post-It Notes Here



Share your ideas about infrastructure (electric, water, sewer, etc.) in Halfmoon.

Post-It Notes Here

Share your ideas about transportation and mobility (bicycles, pedestrians, vehicles, transit, accessibility and connectivity, etc.) in and around Halfmoon.

Post-It Notes Here



Share your ideas about history and recreation in Halfmoon.

Post-It Notes Here

Post-It Notes Here



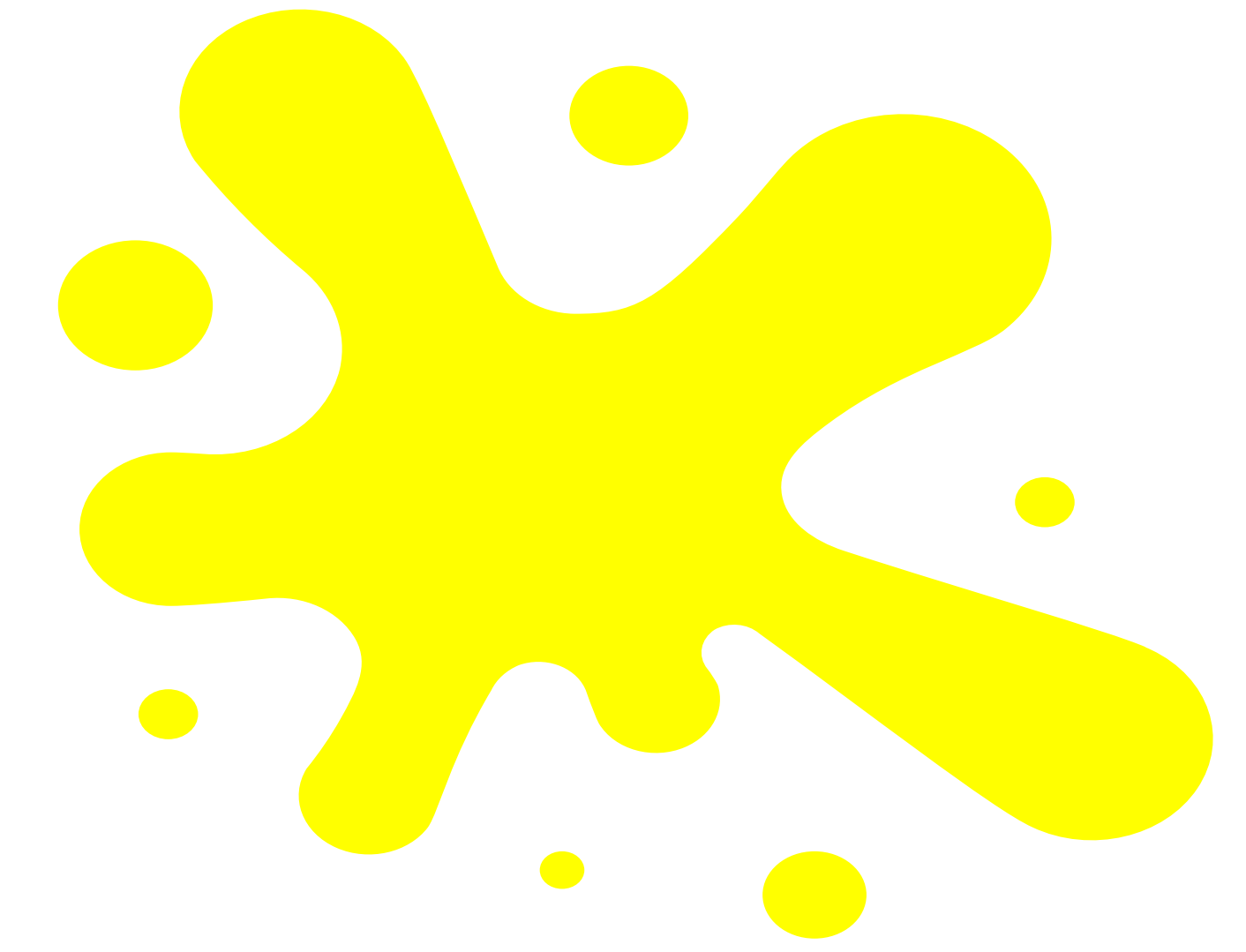
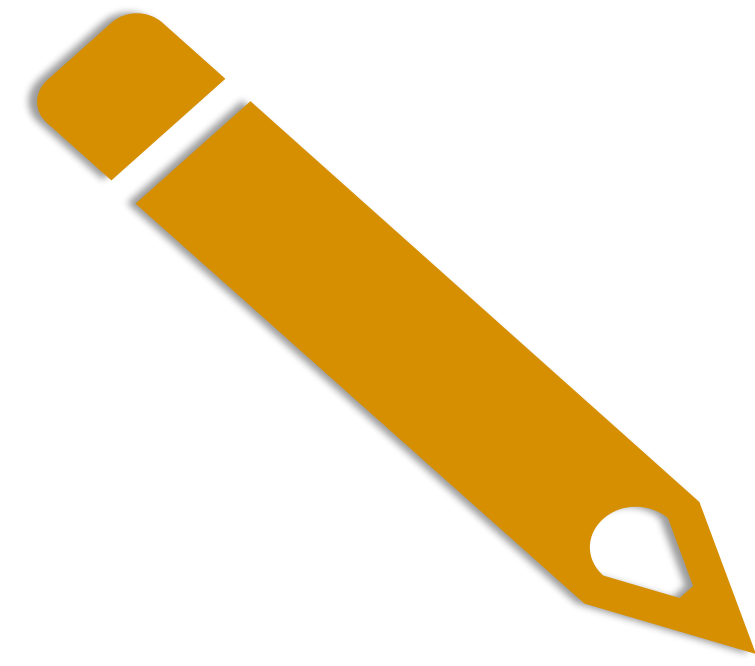
Share your ideas about Halfmoon's community character, neighborhoods, and housing types.

Post-It Notes Here

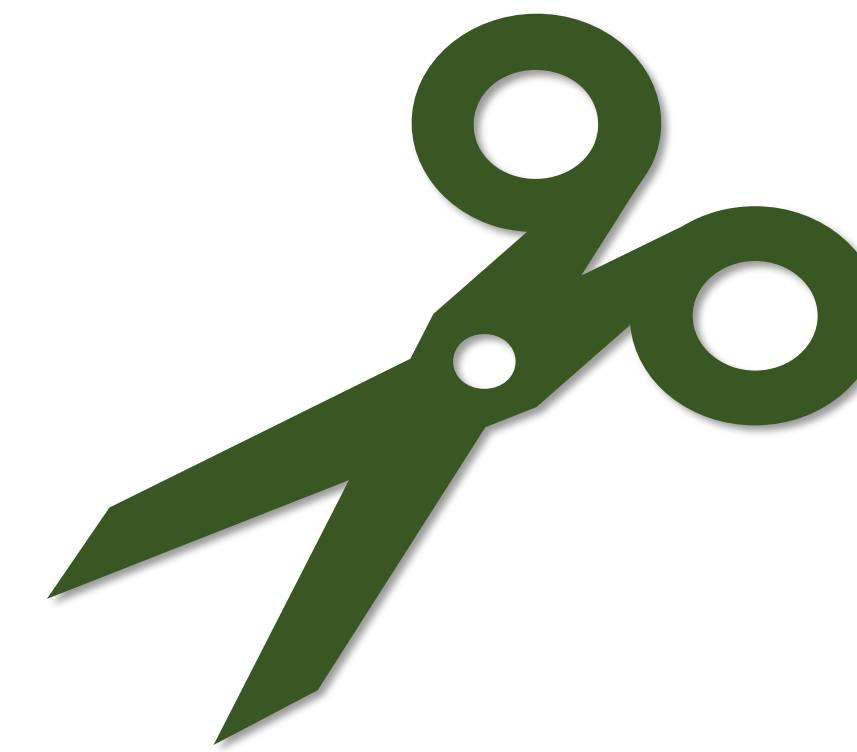
Post-It Notes Here



9



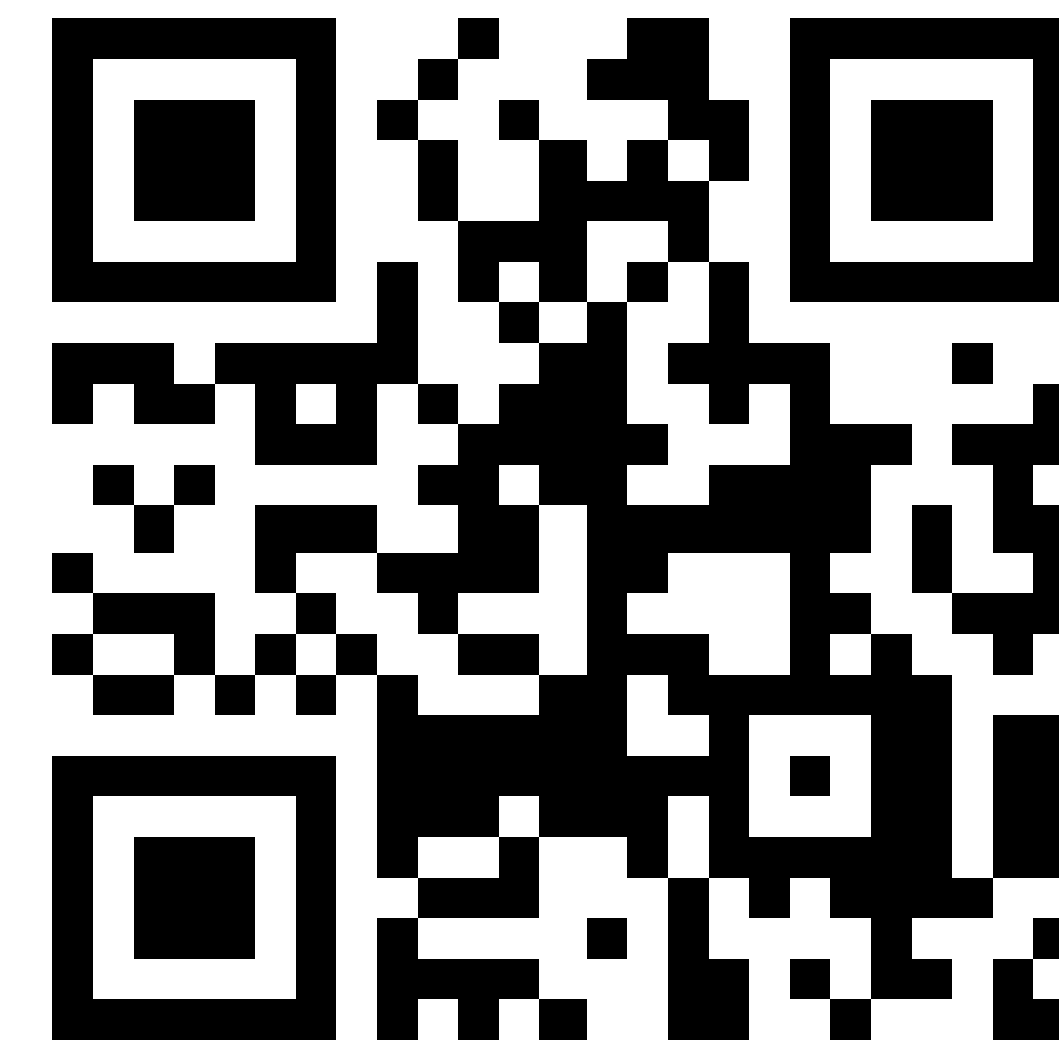
KIDS CORNER



Participate in the online community survey to provide more thoughts and ideas about your community!

Scan the QR code to take the survey on your mobile device!

Need a paper copy? See facilitators for printed version.



OTHER THOUGHTS AND IDEAS

Share any additional thoughts and ideas you have for Halfmoon here!

Post-It Notes Here

Post-It Notes Here

